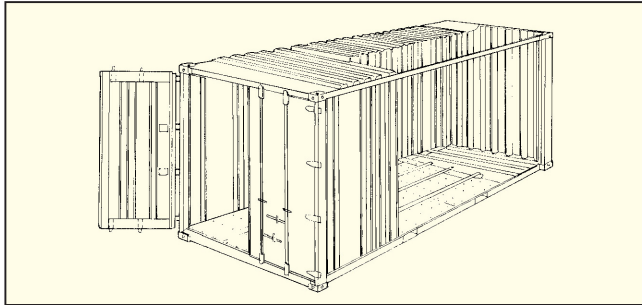


20' Dry Freight Containers



Height	Material	Tare Weight (kg/1bs)	Max* Cargo Cap. (kg/1bs)	Door Opening		Interior Dimensions			Interior Cube (m ³ /cft)
				Width (mm/ft)	Height (mm/ft)	Length (mm/ft)	Width (mm/ft)	Height (mm/ft)	
8' - 6"	Steel	2,330 5,137	28,150 62,060	2,340 7' 8"	2,280 7' 6"	5,898 19' 4"	2,393 7' 9"	2,392 7' 10"	33.2 1,172

Remarks * : Subject to road and rail weight limitations.

** : Figures were changed from containers produced after July 1998.

: Above are typical figures for this type of containers.