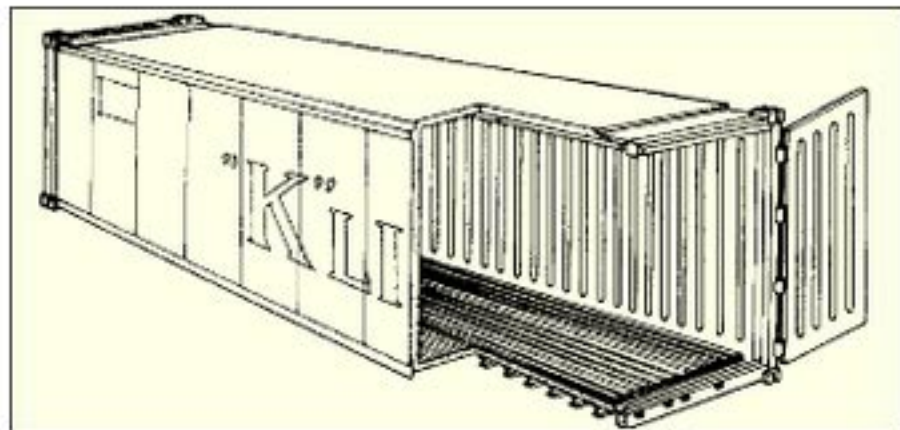
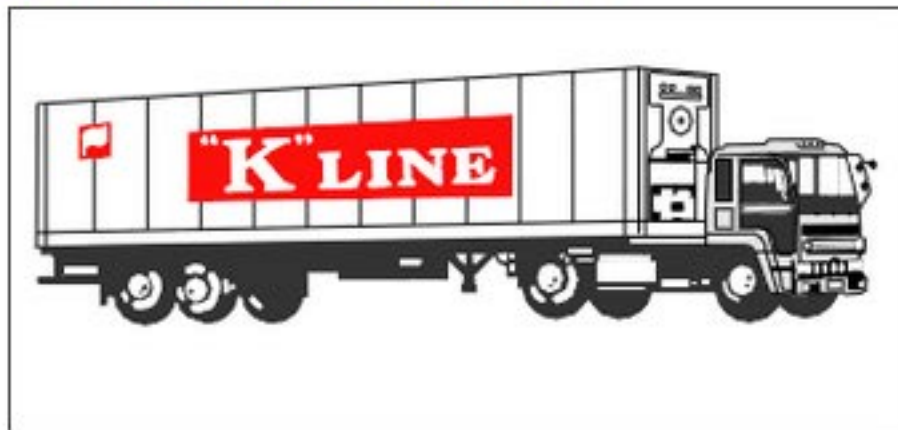


40' Refrigerated Freight Container



		Tare Weight (kgs/lbs)	Max Cargo Cap. (kgs/lbs)	Door Opening		Interior Dimensions			
				Width (mm/ft)	Height (mm/ft)	Length (mm/ft)	Width (mm/ft)	Height (mm/ft)	Cube (m3/cft)
Height		4,100 9,039	26,380 58,158	2,286 7' 6"	2,169 7' 1"	11,679 38' 4"	2,286 7' 6"	2,211 7' 3"	59.0 2,083